

# JVC

## SERVICE MANUAL

VIDEO CASSETTE RECORDER

### HR-J281EU/J289EU



**SQPB**  
**SHOWVIEW®**  
**VHS**  
PAL

Regarding service information other than these sections, refer to the HR-J280EU service manual (No.82844). Also, be sure to note important safety precautions provided in the service manual.

#### **SPECIFICATIONS** (The specifications shown pertain specifically to the model HR-J280EU/J281EU/J289EU/J480EU)

##### GENERAL

Power requirement : AC 220 V – 240 V~, 50 Hz/60 Hz  
Power consumption  
  Power on : 14 W  
  Power off : 3.4 W  
Temperature  
  Operating : 5°C to 40°C  
  Storage : -20°C to 60°C  
Operating position : Horizontal only  
Dimensions (WxHxD)  
  : 360 mm x 94 mm x 278 mm  
Weight : 3.2 kg  
Format : VHS PAL standard  
Maximum recording time  
  (SP) : 240 min. with E-240 video cassette  
  (LP) [HR-J480EU only] : 480 min. with E-240 video cassette

##### VIDEO/AUDIO

Signal system : PAL-type colour signal and CCIR monochrome signal, 625 lines 50 fields  
Recording system  
[HR-J480EU] : DA4 (Double Azimuth) head helical scan system  
[HR-J280/281/289EU] : Rotary two-head herical scan system

Signal-to-noise ratio: 45 dB

Horizontal resolution : 250 lines  
Frequency range : 70 Hz to 10,000 Hz  
Input/Output : 21-pin SCART connectors : IN/OUT x 1, IN/DECODER x 1

##### TUNER/TIMER

TV channel storage capacity : 99 positions (+AUX position)  
Tuning system : Frequency synthesized tuner  
Channel coverage : VHF 47MHz – 89MHz/  
104MHz – 300MHz/  
302MHz – 470MHz  
UHF 470MHz – 862MHz  
Aerial output : UHF channels 22 – 69 (Adjustable)  
Memory backup time : Approx. 10 min.

##### ACCESSORIES

Provided accessories : RF cable,  
Infrared remote control unit,  
"R6" battery x 2

*Specifications shown are for SP mode unless otherwise specified.  
E. & O.E. Design and specifications subject to change without notice.*

# JVC

VICTOR COMPANY OF JAPAN, LIMITED  
VIDEO DIVISION

S40894

# TABLE OF CONTENTS

DIFFERENT TABLE ..... (1 only)

## 5. PARTS LIST

5.1 PACKING AND ACCESSORY ASSEMBLY <M1> ..... 5-1

The following table indicate main different points between models HR-J280EU, HR-J281EU and HR-J289EU.

ITEM	MODEL	HR-J280EU	HR-J281EU	HR-J289EU
FRONT PANEL COLOR		PURE SILVER	BLACK	BLACK & GOLDLETTER

The following table indicate different parts number between models HR-J280EU, HR-J281EU and HR-J289EU.

### PACKING AND ACCESSORY ASSEMBLY<M1>

REF NO.	ITEM	MODEL	HR-J280EU	HR-J281EU	HR-J289EU
306	REMOTE CONTROL UNIT		LP20878-002A	LP20878-003A	←
306A	COVER(BATTERY)		LP40610-002A	LP40610-001A	←

### FINAL ASSEMBLY<M2>

REF NO.	ITEM	MODEL	HR-J280EU	HR-J281EU	HR-J289EU
△ 501	FRONT PANEL ASSEMBLY		LP10293-032B	LP10293-033B	LP10293-038A
501A	CASSETTE DOOR		LP20868-033A	LP20868-034A	LP20868-037A
501D	DISPLAY WINDOW		LP20869-088B	LP20869-089B	LP20869-098A
501E	ORNAMENT		LP30649-005A	LP30649-002A	←
△ 502	TOP COVER		PQ11898-52-23	PQ11898-50-23	←
503	SCREW,X4, TOP COVER(SIDE)		QYTDSF3010R	QYTDSF3010M	←

Note: Mark ← is same as left.

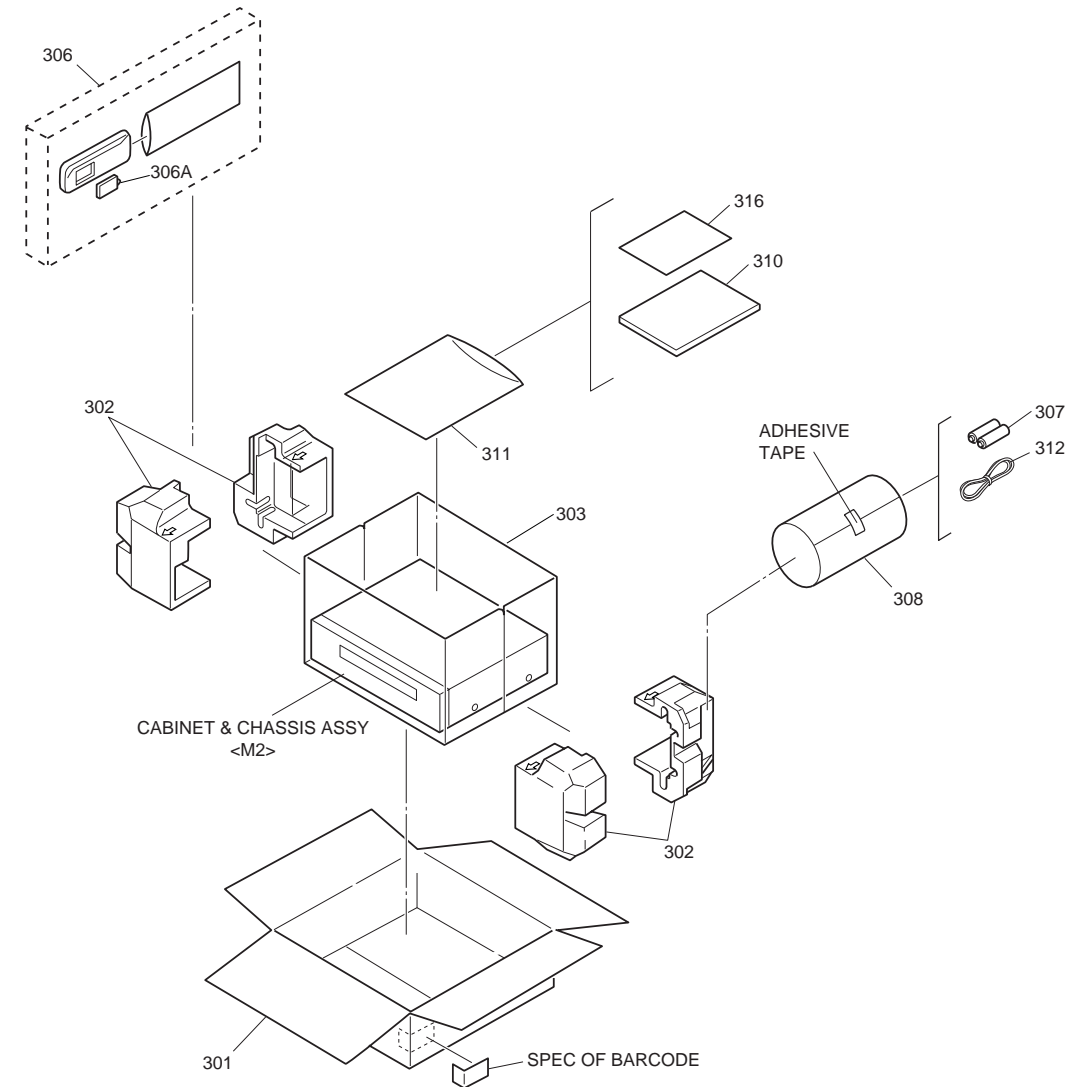
# SECTION 5 PARTS LIST

## SAFETY PRECAUTION

Parts identified by the △ symbol are critical for safety. Replace only with specified part numbers.

### 5.1 PACKING AND ACCESSORY ASSEMBLY <M1>

The instruction manual to be provided with this product will differ according to the destination.



# △ REF No. PART No. PART NAME, DESCRIPTION # △ REF No. PART No. PART NAME, DESCRIPTION

\*\*\*\*\*

### PACKING AND ACCESSORY ASSEMBLY <M1>

301	LP30897-001A	PACKING CASE
302	LP30898-001A	CUSHION ASSY
303	PQM30021-93	POLY BAG
306	LP20878-003A	REMOTE CONTROLLER
306 A	LP40610-001A	COVER(BATTERY)
307	—	BATTERY,X2("R6"TYPE)
308	QPC02202230P	POLY BAG
△ 310	LPT0566-001A	INST.BOOK(EN)
△	LPT0566-002A	INST.BOOK(GE)
△	LPT0566-003A	INST.BOOK(FR)
△	LPT0566-004A	INST.BOOK(DU)

△	LPT0566-005A	INST.BOOK(SP)
△	LPT0566-006A	INST.BOOK(IT)
△	LPT0566-007A	INST.BOOK(DA)
△	LPT0566-008A	INST.BOOK(FI)
△	LPT0566-009A	INST.BOOK(SW)
△	LPT0566-010A	INST.BOOK(NO)
△	LPT0566-011A	INST.BOOK(PT)
△	LPT0566-012A	INST.BOOK(GR)
△	LPT0566-013A	INST.BOOK(CZ)
△	LPT0566-014A	INST.BOOK(PO)
△	LPT0566-015A	INST.BOOK(HU)
311	QPC02503530P	POLY BAG
312	PEAC0300-02	RF CABLE
316	BT-54013-2	WARRANTY CARD